

KANTAFLEX
TECHNOLOGY DECADE AHEAD
KANTAFLEX INDIA PVT LTD

Introduction



Kantaflex (India) Pvt Limited a corporate company incorporated during 1991 under company act, 1956 (No. 1 of 1956) by the Registrar of Companies Tamil Nadu. The company is having many activities like domestic & international trading, manufacturing in accordance with end user requirements, exports & imports, servicing and design consulting in various fields of industrial construction, high raised buildings, public utility stadium & auditorium, railways, defense, marine, aerospace, oil & refineries, chemical & fertilizers, mechanical & fabrication industry so on.

Today, each of our product lines is considered the standard by which all others are measured. Each of our products is engineered to provide the same quality and value that designers and contractors have come to expect. The products of Kantaflex (India) Pvt Limited exceeds the national and international standards like BIS, AASTHO, ASTM, SAE, and BSS and guaranteed for long life with very economical prices.

MOTTO

VALUES

We believe in treating every company we do business with the same way that we would wish to be treated. We do this through our core values by constantly striving for and maintaining:

CAPABILITY

State-of the-art research, testing and manufacturing facilities to support and serve the needs of project designers and contractors

CRAFTSMANSHIP OF ANOTHER ERA

Quality and attention to detail from design through installation and inspection. Each completed project is our best form of advertising.

FLEXIBILITY

Design solutions tailored to meet your unique project requirements rather than standard design.

QUALITY ASSURANCE

Technical support provided with skill and commitment through field technicians, local representatives, a certified contractor network and the strongest joint-and-several warranty in the industry.

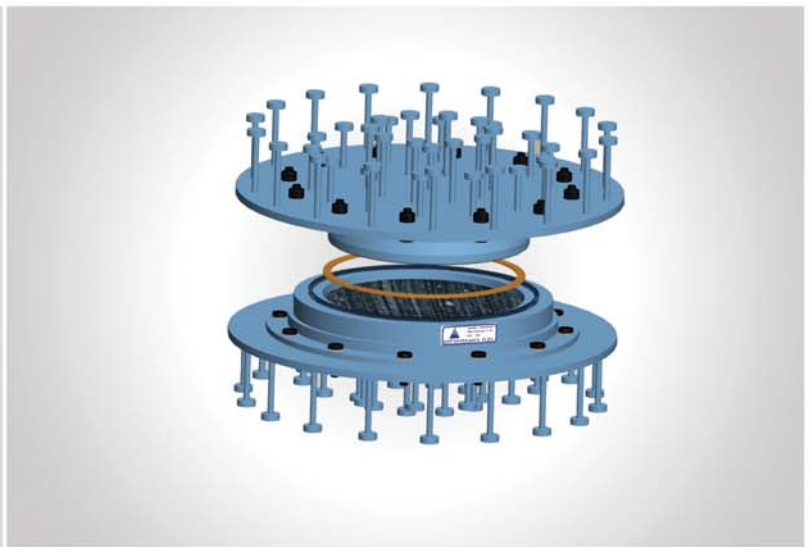
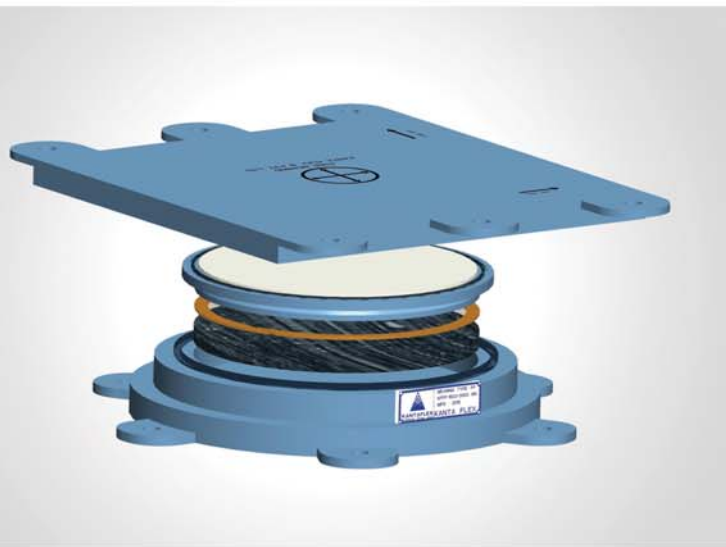
IMAGINATION

We believes that customers deserve more than a monotonous approach to their needs. Each project is unique and requires individual attention tailored to its needs. We are committed to using our considerable experience to provide:

PROBLEM SOLVING

We strive to earn with each new project the accolade of being the "Can Do!" company.

BRIDGE BEARINGS



Types of POT Bearings

■ FIXED BEARING

It does not allow two-direction movements, but allows it to rotate. Components of the bearing include base pot, piston, and enclosed rubber rotation element.

■ FREE TYPE POT CUM PTFE BEARING

It allows rotation, longitudinal & transverse movements. Components are the same as those of a fixed bearing except PTFE, and able to provide two-direction movements.

■ GUIDED BEARING

It is a type of sliding assembly bearing allows rotation and one-direction movement. The main components of a guided bearing are the same as those of a fixed bearing, but are able to provide longitudinal/Transverse movement function.

■ METALLIC GUIDED

It consists of a sliding assembly with restraint along a desired direction to bear and transmit horizontal force and capable of allowing movement in a direction perpendicular to the direction of horizontal force

■ PIN FIXED

It consists of a metal pin provided within a metal cylinder to bear & transmit horizontal force along any direction in the horizontal plane and accommodating rotational movement about any axis.

BRIDGE BEARINGS

ELASTOMERIC BEARINGS

- Consist of an elastomeric block usually of rectangular shape, which are generally used for most of the bridges.
- Term elastomer refers to synthetic rubber particularly to poly chloroprene rubber commercially known as "Neoprene".
- They provide a connection to control the interaction of loadings and movements between super structure and sub structure.

- It can accommodate translation movement in any direction and rotation about any axis by elastic deformation, when there is no tension.

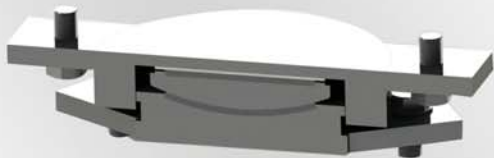
ROCKER CUM ROLLER BEARINGS

- Used in railway bridges with spans in excess of 30.5m, where open web through girders are generally provided.
- The amount of movement needed and the vertical load transmitted through each bearing is too large to be catered by the sliding bearings.
- It is common, on Indian Railways, to provide rocker & roller bearings at free end of open web through girders, & rocker bearings at the fixed end.



SPHERICAL BEARINGS

- Used to accommodate large rotations by the use of a lower spherical surface.
- Normally lined with dimpled PTFE and matched to an upper stainless-steel surface.
- Design comprised of a convex base with a mating concave element for rotation.
- All contact surfaces are PolyTetraFluoroEthylene (PTFE) to stainless steel.



BRIDGE EXPANSION JOINTS

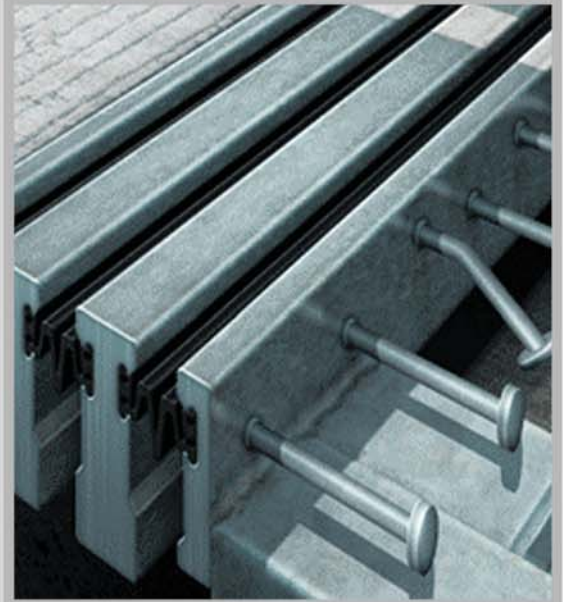


STRIP SEAL EXPANSION JOINTS

- Monolithic edge beam is used, so the stability and life of the product increases.
- Tough Elastomer seal is used as water barrier in the gap which has a very high life time.
- Elastomer seal is mechanically locked into a pair of rolled or extruded metal shapes that in turn are anchored to the edges of deck slabs.
- The proprietary design of our Strip seal is registered, with Government of India.

MODULAR SEAL

- System shall consist of multiple strip seal joints that shall allow movements as shown on the plans.
- Expansion joint system shall consist of neoprene strip seals mechanically held in place by steel edge and separation beams.
- Each separation beam shall be supported by independent multiple support bars, which are welded to the separation beams.



OMEGA JOINT

- It provides unique properties to withstand high water pressure in combination with large movements in all directions.
- It is an ideal solution for joints where large gap movements are expected as a result of temperature effects and/or settlement.
- Omega profile can be manufactured in a variety of sizes to fit almost any application.
- It is Ideal for Metro Rail projects.

BRIDGE EXPANSION JOINTS



COMPRESSION SEAL EXPANSION JOINT

- Consists of steel armoured nosing at two edges of the joint gap suitably anchored to the deck concrete and a performed elastomer seal compressed and fixed into the joint gap with special adhesive birder.
- This will cater for a horizontal movement upto 40mm and vertical movement of 3mm.

SLAB SEAL EXPANSION JOINT

- Consist of steel insert and elastomeric slab unit.
- Elastomeric joints are normally fixed to the deck using bolt anchors.
- This type of seal is recommended for simply supported or continuous spans, right or skew (less than 20 degree), moderately curved with maximum movement upto 50mm

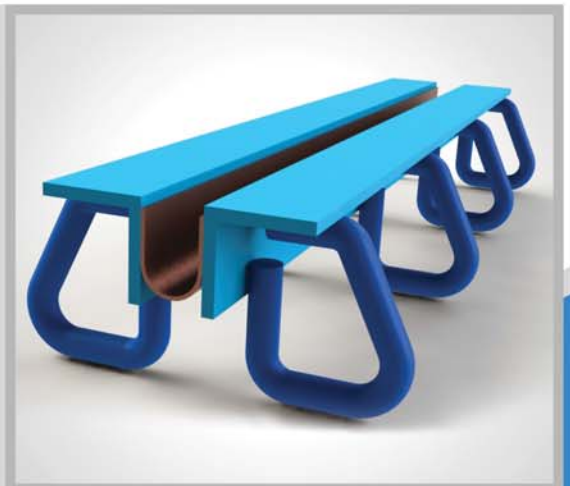


SLIDING

- Used to accommodate large movement ranges for short and medium span bridges.
- Structurally simple, reasonable in cost and have performed satisfactorily.
- Two overlapping steel plates are attached to the bridge deck, one on each side of the expansion joint opening.

COPPER STRIP EXPANSION JOINT

- It is a water proof joint with very long life, as the expansion medium is copper strip.
- Designed to accommodate movement by flexing.



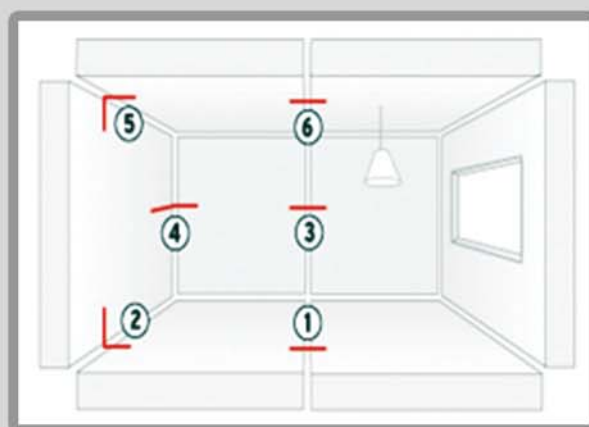
ARCHITECTURAL EXPANSION JOINTS



Kantaflex India Pvt Ltd expansion joints are the vanguard of architecturally specified products. We constantly innovate and incorporate the latest in technology to protect commercial buildings like hospitals, schools, apartments, shopping centres, hotels and airports from damage due to thermal expansion and contraction caused by temperature changes, sway caused by wind, seismic events, etc.

These products are used in the joints of :

1. Floor to Floor
 2. Floor to Wall
 3. Wall to Wall
 4. Corner Wall
 5. Wall to Ceiling
 6. Ceiling to Ceiling
- Roof to Roof (Outdoor)
Roof to Wall (Outdoor)



The products shall have Standard Mill finish, Clear Anodized or power coated finishes.

KANTAFLEX INDIA PVT LTD SERVICES

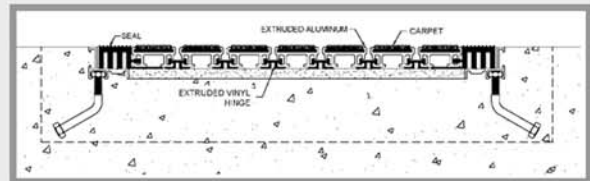
- Selection of right products for right location.
- Design the product for ultimate use.
- Site assessment and measurement.
- Fixing the products at site location.

MATS & CORNER GUARDS



MATS:

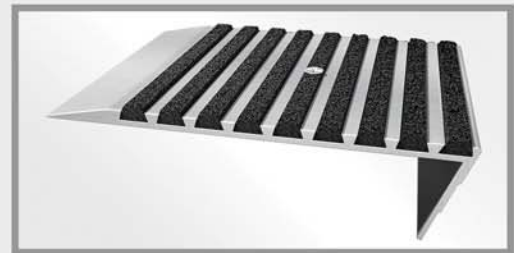
Flexgrid



The FlexGrid Entrance System from Kantaflex India Pvt Ltd provides the best of both worlds. The low profile grid design provides the maximum durability and performance, while its flexibility allows the grid to be rolled back for easy cleaning. Load or moisture conditions doesn't matter, this system will exceed your expectations.

STAIR NOSINGS

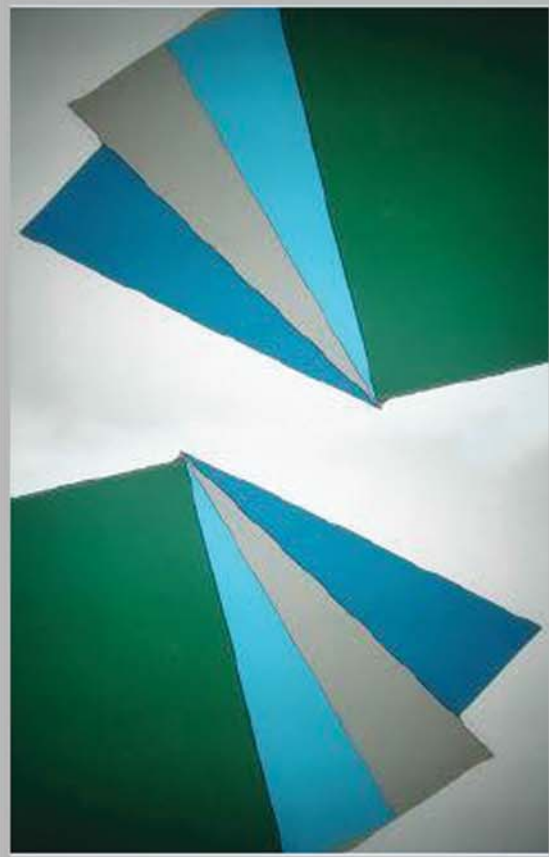
- Making the stairs in your facilities safe and attractive is the goal of our stair nosing line.
- We offer a variety of component systems to provide safety, durability and long-term value.
- They are economical, durable and easy to install in new construction or even in renovation, we have the right solutions for all of your stair nosing and emergency egress needs.



CORNER GUARDS:

- Made utilizing high grade raw material and innovative machines.
- Manufactured within strict conformation with the industry laid norms and standards.
- Ideally utilized for basement parking concrete column structures and inside industries to avoid damage from and to vehicles.

RUBBER SHEETS & INDUSTRIAL HOSES



RUBBER SHEETS

- It offers rubber flooring in many different sizes, shapes, colors, textures and durability ratings.
- Rubber floors are a durable and long lasting alternative to traditional wood or tile floors.
- Insulating rubber mats are designed for the use as floor covering for the protection of workers on AC (alternate current) DC (direct current).
- Manufactured from vulcanized rubber plasticised compound.
- It provides cushioning on floor in a weight room, gym, gymnastics facility, personal exercise room, garage or general walkway for residential or commercial rubber floor use.

INDUSTRIAL HOSES

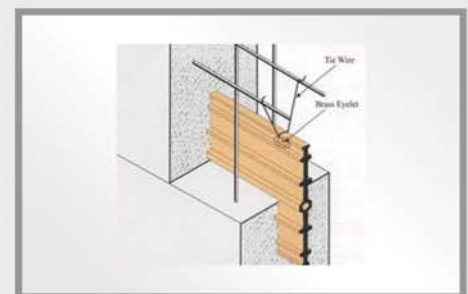
- Kantaflex India Pvt Ltd boast high resistance to pressure, temperature and media.
- Kantaflex India Pvt Ltd hoses are efficient, robust and reliable operating materials, ideal for a wide range of applications in industry and business.
- Kantaflex India Pvt Limited's steam, hot-water, oil and fly ash hoses meet top demands for thorough cleaning and other professional applications.
- They comply with national and international standards as well as individual customer specifications



WATER STOPS



- These are flexible PVC profile which acts as a sealant to Water at construction joints, as well as functions as expansion joint.
- Used mostly in basements, Water retaining structures like Water tanks, Swimming pools, structural foundations & other below ground level Constructions and prevent any seepage of water in or out through joints.
- A typical waterstops have two identical half on both side of a central bulb.
- Manufactured from Anti-Ageing customized plastic compound with PVC as a base polymer.
- Exhibits properties like High Elasticity & Tensile Strength, Immune to Corrosion, Excellent weather resistant, Unaffected by acids, alkalis, metals salts and other chemicals, Lower water absorption.
- Able to withstand high Hydrostatic pressure, Can bear shocks of heavy turbines, Earth quakes, Floods.
- Even can withstand expansion or contraction movement at joints and take care of any deflection or displacement arising due to change in temperature, differential settlement of foundation.



GEO-MEMBRANE



- Geo-membranes are used for geo-technical engineering solutions in fluid containment requirements.
- The primary function of geo-membranes is to provide impermeable liquid or vapour barriers.
- They are usually made from continuous polymeric sheets that are very flexible.

TYPES OF GEO-MEMBRANES

GEO TEXTILE

- It is a kind of textile used for filtration of water by allowing water to pass through and retain all other soil particles.
- Non-woven geo textile is also used as paving fabric in civil structures for pavement applications.

HIGH DENSITY POLYETHYLENE (HDPE)

- It is produced from prime high molecular weight resins resulting in a high quality premium grade, flexible geo-membrane.
- It is the most widely used product for lining of solid waste sites, mines and other fluid containment applications.

LOW DENSITY POLYETHYLENE FILMS (LDPE)

- It acts as a barrier between the soil and the stored material and plays a major role in any kind of construction since it is a non-conductor of liquids and gases.
- The main purpose of this film is to avoid water, fluid or gas seepage to earth.

NOISE BARRIERS



- KantaSystem's noise barriers are high performance absorptive noise barriers which makes it possible to effectively mitigate much of the noise generated.
- The absorptive type noise barrier effectively reduces noise, while the reflective products such as the concrete have been the traditional method for noise barrier walls, which simply bounces sound waves into different directions, whereas the KantaSystem's noise barriers actually Kill the sound waves that hit the wall and significantly reducing overall noise.



Distinguishing features:

- Lightweight
- Modular Design
- Choose any color
- Non-corrosive
- Will not rust, rot, or stain
- Impervious to rain, snow, ice & sleet
- Graffiti resistant
- Easy to assemble and disassemble
- Fully Absorptive
- Water/Moisture resistant
- Wind load tested to 150+ mph
- Strong and durable
- Impervious to most chemicals

GOVERNMENT OF INDIA
MINISTRY OF ROAD TRANSPORT & HIGHWAYS

Transport B
1, Parliament
New Delhi -
Telefax : +911123
Dated : 16th Octobe

No.RW/NH- 34054/2/2011- S&R(B)

To

1. The Chairman, National Highways Authority of India, G-5 & G-6, Sector-10 Dwarka, New Delhi - 110 045
2. The Director General (Works), Central Public Works Depart Bhawan, New Delhi - 110 001
3. The Director General (Board Roads), Seema Sadak Bhawan, Karanika, Delhi Cantt., New Delhi.
4. All Engineer-in-Chief/ Chief Engineers of States/ Union Territories/ T Department/Road Construction Department/Highways Depart with National Highways and other Centrally sponsored schemes

GOVERNMENT OF INDIA
MINISTRY OF ROAD TRANSPORT & HIGHWAYS

Jeevan Tea Building,
Sanad Marg,
New Delhi-110001
Dated: 2nd June, 2015

Sub: Empowerment of manufactures firms/ authorized suppliers of expansion joint for bridges on National Highways and other Centrally Sponsored schemes.

GOVERNMENT OF INDIA
THE PATENT OFFICE
CERTIFICATE OF REGISTRATION OF DESIGN

Design No. 267530
Date: 20/11/2014
Country: India

INTELLECTUAL PROPERTY INDIA
PATENTS / DESIGNS / TRADEMARKS
Controller General of Patents, Designs and Trade Marks

ORIGINAL
No. 39781

TO WHOMSOEVER IT MAY CONCERN

This is to certify that the design of which a copy is annexed hereto has been registered in the name of KANTAFLEX INDIA PRIVATE LIMITED, COMPANY REGISTERED UNDER THE LAWS OF INDIA, HAVING ITS PLACE OF BUSINESS AT NEW NO.103, PRASAD SALAI, 1ST FLOOR, BROADWAY, CHENNAI 600 008, TAMIL NADU, INDIA.

In pursuance of and subject to the provisions of the Designs Act, 2000 and the Designs Rules, 2001.

TO WHOMSOEVER IT MAY CONCERN

This is to certify that M/s. Kantaflex India Pvt. Ltd. from Chennai have supplied 300mm width PVC water stopper for our UAA-04 Project in Chennai Metro Rail Limited Project.

We appreciated their commitments and quality of the products are satisfied the specifications.

We look forward same support with M/s. Kantaflex (India) Pvt. Ltd. in the future.

CERTIFICATE OF REGISTRATION
ISO 9001
AMERICAN GLOBAL STANDARDS™

KANTAFLEX (INDIA) PRIVATE LIMITED
Corporate Office: No. 9, 2nd Floor, Vasu Street, Kilpauk, Chennai - 600 030
Factory: No. 652 (N), Sipcot Industrial Complex, Gummidipoondi - 601 301
Sales Office: No. 102, Broadway Main Road, Chennai - 600 108, Tamilnadu, India.

American Global Standards, LLC issues this certificate to the firm named above, having assessed and approved the firm's quality management system and finding the system conforms to the standards of

ISO 9001:2008

The quality management system is applicable to the following:
Manufacturing and Supply of Bearing & Expansion Joint & Tn of Industrial Rubber Products & Balco USA Aluminium Profiles & Expansion Joints

This approval is subject to the firm maintaining its system to the required standards, which monitored by AGS. In the issuance of this certificate, AGS assumes no liability to any party other than the firm named above, and then only in accordance with the agreed upon Quality System Agreement.

Certification Number: AGS-5070813-1
Original Approval: July 08, 2013
Date of Issue: July 08, 2013

METRO TUNNELING CHENNAI
L&T - SUGG JV

(A Joint Venture between Larsen & Toubro Limited and Mangal Uralte Construction GmbH)

Project Office: Opp. to Sangan Chambers, Nether park, Poonamallee Highway, M/psk, Chennai-600015, Phone no: 844-3842934

Date 20th February 2016

TO WHOMSOEVER IT MAY CONCERN

This is to certify that M/s. Kantaflex (India) Pvt. Ltd. from Chennai have supplied 300mm width PVC water stopper for our UAA-04 Project in Chennai Metro Rail Limited Project.

We appreciated their commitments and quality of the products are satisfied the specifications.

We look forward same support with M/s. Kantaflex (India) Pvt. Ltd. in the future.

GOLANI BROTHERS
CIVIL ENGINEERS & CONTRACTORS

303, Dalomol Chambers, 29, New Marine Lines, Mumbai - 400 020. Tel : 2200 0012, Fax : 2203 2848
Email : admin@golanibrothers.co.in

TO WHOMSOEVER IT MAY CONCERN

This is to certify that M/s. Kantaflex India Pvt. Ltd. have supplied and installed the "Expansion Joint for Floor, Wall and Terrace & External" in our Hostel 10 Project inside IITB Powai.

We highly appreciate their commitment towards maintaining high quality work , value addition & professionalism.

We earnestly wish them progress & success in all their future endeavors.

Yours faithfully,
Prakash Brothers
K. Prakash
Authorized Signatory

Place : Mumbai

GOVERNMENT OF INDIA
MINISTRY OF ROAD TRANSPORT & HIGHWAYS

Parivahan Bhavan,
1, Parliament Street,
New Delhi-110001
Dated: 3rd April, 2014
3rd April

RV-NH-34054/2/2011-S&R(B)

To,

1. The Chairman, National Highways Authority of India, G-5 & G-6, Sector-10 Dwarka, New Delhi - 110045
2. The Director General (Border Roads), Seema Sadak Bhawan, Ring Road, Nariana, Delhi Cantt. New Delhi.
3. All Engineer-in-Chief/ Chief Engineers of States/ Union Territories, Public Works Department/ Road Construction Department/ Highways Departments (dealing with National Highways and other Centrally sponsored schemes)

Jan 28 2014 5:02PM RSSO 2465705

Subject: Inclusion in the approved list of RDGO for fabrication and supply of POT-PTFE Bearings and Expansion Joints.

Ref: Your Vendor Reference ID QAC2013/827 dated 07-06-2013 & your letter No. RDGO AR13131109 dated 08-11-2013.

1. Based on your request and subsequent verification of the infrastructure and other facilities installed at your works at B-52(N) SIPCOIT Industrial Complex, Gummidipoondi, Chennai (Tamil Nadu), your firm is hereby registered on the approved list of RDGO for fabrication and supply of POT-PTFE Bearings and Expansion Joints.

2. Any change in the address of your office or manufacturing units shall be brought to the notice of Director General/RSS, RDGO, Ludhiana. You are liable to be dropped from the

TO WHOMSOEVER IT MAY CONCERN

This is to certify that M/s Kantaflex India Pvt. Ltd. have supplied and installed the "Expansion joint for floor, wall and Terrace & External" in our JIPMER Phase-project.

We and our client were satisfied with their product & services, and wish you all the best for all your endeavours.

Thanking you

Yours faithfully
For Larsen & Toubro Limited

L&T Construction
Buildings & Factories

TO WHOMSOEVER IT MAY CONCERN

This is to certify that M/s Kantaflex India Pvt. Ltd. have supplied and installed the "Expansion joint for floor, wall and Terrace & External" in our JIPMER Phase-project.

We and our client were satisfied with their product & services, and wish you all the best for all your endeavours.

Thanking you

Yours faithfully
For Larsen & Toubro Limited

L&T Construction
Buildings & Factories

Testing Facilities at Kantaflex India (P) Ltd.



Following strict quality standards, we maintain state-of-the-art testing facilities including a well-equipped laboratory and test Press of 2463 Tons – Vertical and 500 Tons – Horizontal load capacities.

METAL UTM



RUBBER UTM





KANTAFLEX

TECHNOLOGY DECADE AHEAD

Corporate Office

New 213 (Old # 113) Prakasam Salai
I Floor, Broadway, Chennai 600108 TN

Factory

B – 52(N), Sipcot Industrial Estate
Gummidipoondi – 601 201

Phone

044 25361242, 25361462.

Mail

kanta@kantaflex.in

Marketing Offices

New Delhi

Mumbai

Hyderabad

Bangalore

Connect Us

www.kantaflex.in

